

## 1 When will the exporter registration requirements come to an end?

Effective October 1, 2023, exporter registration including renewals will no longer be a requirement for entities involved in exporting. All existing registrations will expire on September 30, 2023.

## 2 Why is the exporter registration being eliminated?

The exporter registration process is being eliminated to:

- Streamline and simplify Jamaica's exporting procedures
- Facilitate a faster turnaround in export shipments by reducing steps in the process
- Reduce duplication of information and cost of services to exporters
- Provide exporters with a more direct system of processing export shipments

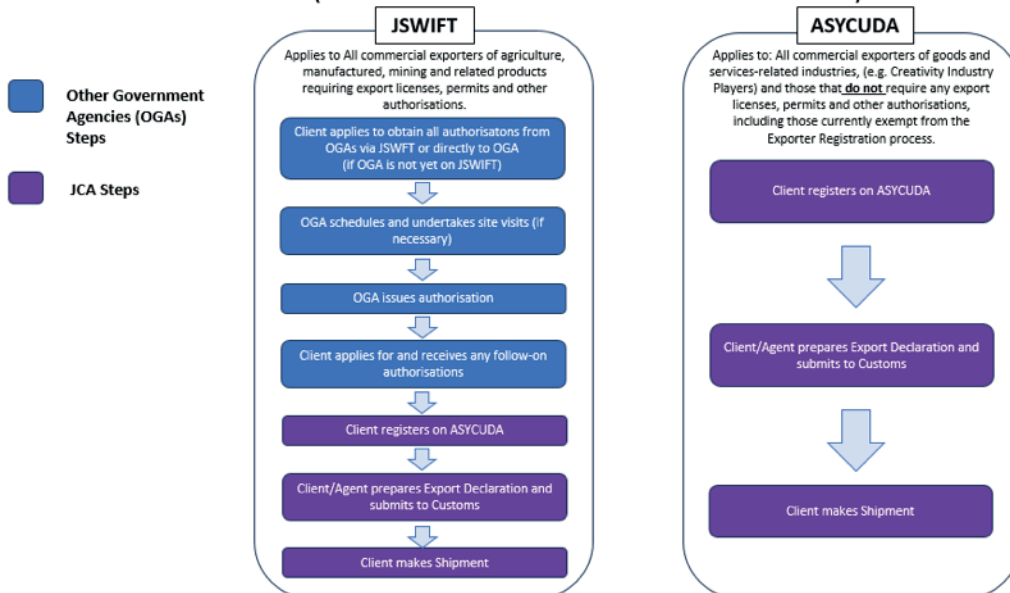
## 3 What is the process for carrying out export shipments effective October 1, 2023?

As of October 1st, exporters carrying out export shipments will go directly to the Jamaica Single Window for Trade (JSWIFT) platform operated by the Jamaica Customs Agency, to access relevant permits/licenses/certifications from those Government Agencies/Border Regulatory Agencies who have been onboarded and proceed to complete their export shipment declaration via the Automated System for Customs Data (ASYCUDA) when ready to ship. Alternatively, exporters who do not require any permits/licenses/certifications would move directly to the ASYCUDA platform to upload their shipment declaration when they are ready to ship.

Exporters should contact the relevant Government Agency/Border Regulatory Agency directly for those permits/licenses/certifications which are currently not available via JSWIFT.

**A summary of the process going forward is outlined below:**

### EXPORTING PROCESS FOR EXPORTERS EFFECTIVE OCTOBER 1, 2023 (WITH REMOVAL OF JAMPRO EXPORTER REGISTRATION PROCESS)



## 4 What are some of the various licenses/permits/certifications required when exporting?

Depending on the products to be exported, exporters must obtain certain approvals/licenses/certifications prior to finalizing their export shipments. The following are some of the product categories which will require approval or licences/permits/certification from the relevant Government Agency/Border Regulatory Agency in order for Jamaica Customs to process your export shipments. Although a number of these approvals can be accessed via the JSWIFT platform, exporters should first verify that the required export service is available on JSWIFT by contacting the appropriate Government Agency/Border Regulatory Agency:

- **Fresh Agricultural Produce:** a certified packaging facility is required. Information on packaging facility specifications and guidelines can be accessed through the Ministry of Agriculture, Fisheries and Mining Plant Quarantine Division.
- **Apicultural, Bee products, animals & animal by-products (e.g. meat, eggs, dairy & animal feed):** the Veterinary Services Division, Ministry of Agriculture, Fisheries and Mining is to be contacted
- **The Jamaica Agricultural Commodities Regulatory Authority (JACRA)** is to be contacted for the following products (as well as derivatives of these products) :
  - Coffee
  - Coconut
  - Cocoa
  - Spices (Pimento incl. the wood and leaves of the pimento tree, Nutmeg, Ginger and Turmeric)
- **The Cannabis Licensing Authority (CLA) is to be contacted for:**
  - Cannabis
  - Hemp
- **The Mines and Geology Division (of the Ministry of Agriculture, Fisheries and Mining) is to be contacted for:**

● Bauxite	● Cement
● Limestone	● Rock
● Aggregates	● Stone
● Gravel	● Soil
● Alumina	

- **The National Environment and Planning Agency (NEPA) is to be contacted for:**

- Scrap products (metals, batteries etc.)
- Hazardous materials
- Endangered species

- **Trade Board Limited is to be contacted for:**

- Scrap metal (including scrap batteries and scrap gold)
- Coffee
- Ammunition (explosives and firearms)
- Plasma (in any form)
- Wood (Lignum Vitae and log wood only)
- Motor vehicles
- Jewellery (excluding those from earth metals)
- Brown sugar

- **Ministry of Health and Wellness**

- Pharmaceutical products
- Additionally, we encourage all exporters to consult with their overseas buyers to establish whether you would need to satisfy any specific market requirements prior to engaging the export process.

## 5 Are there any fees to access the JSWIFT and/or ASYCUDA Platforms?

There are no fees to access or register on the JSWIFT and ASYCUDA Platforms. Exporters however may need to pay applicable fees for permits/licenses/certification where relevant.

## 6 Are separate User applications required to access both the JSWIFT and ASYCUDA platforms?

The systems are separate and therefore two registrations are required to access the JSWIFT and ASYCUDA platforms. Both platforms can be accessed by using any reliable internet browser.

## 7 Under what circumstances do I access the JSWIFT platform and what is the process?

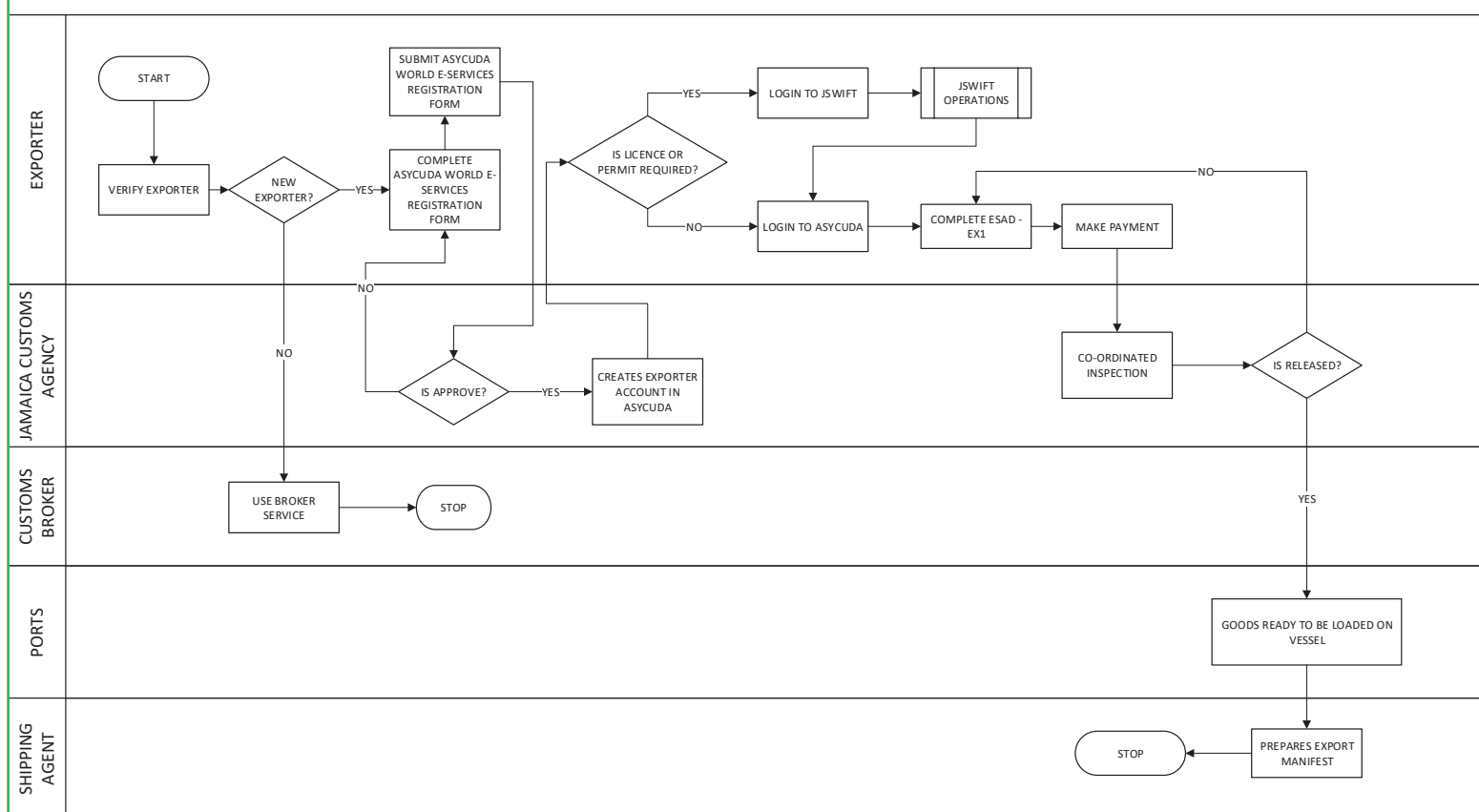
The user is required to access the JSWIFT platform to apply for Permits/licenses/certifications required for export from the requisite Government Agency/Border Regulatory Agency. Please note that JSWIFT is being implemented on a phased basis hence the exporter is required to find out if the required service is available on this platform. In accessing the platform, the user is required to register on the JSWIFT portal to obtain the credentials to log into the system. JSWIFT can be accessed using <https://www.jswift.gov.jm/>. The instructions on how to register for user access i.e. individual and Company registration can be accessed using Jamaica Customs eLearning resources listed below:

- This platform is powered by Moodle and allows for self-enrollment (The Course Code is available on the welcome page):  
<https://www.learning.jswift.gov.jm/login/index.php>
- YouTube Channel@Learning JSWIFT, video on How to Register for User Access.
- Video on individual Registration:  
<https://www.jswift.gov.jm/videos>

## 8 How do I access ASYCUDA to submit my shipment Declaration?

A summary of the process to access the ASYCUDA platform is outlined below:

### ASYCUDA EXPORTER REGISTRATION



**9 Can exporters commission the services of a licensed Customs Broker to assist with the Process?**

Exporters can commission the services of a licensed Customs Broker to do business on their behalf. A listing of licensed Customs Brokers can be accessed on the Jamaica Customs Website: <https://www.jacustoms.gov.jm/>.

**10 Who should I contact regarding enquiries relating to the `Process?**

Exporters can email Jamaica Customs Help Desk at [helpdesk@jca.gov.jm](mailto:helpdesk@jca.gov.jm) or call (876) 922-5140-9 extensions: 2421, 2422, 2424, 2393, 2397, 2396, 2425, 2420; Straight line – (876) 750 – 3030

JSWIFT also has a dedicated Customer Support Team who can be contacted at:  
Email: [support@jswift.gov.jm](mailto:support@jswift.gov.jm)  
Telephone: (876)-750-3050; (876)-750-3096-7

**11 Will Consignee Numbers assigned by JAMPRO still be required?**

With the elimination of the exporter registration process, there will no longer be a need for exporters to apply for consignee numbers.

**12 Will JAMPRO continue to maintain a register of exporters?**

Yes; JAMPRO will continue to maintain a register of exporters from data received from Jamaica Customs via the ASYCUDA platform.

**13 What are the services offered by JAMPRO to support exporters?**

Primarily, JAMPRO assists exporters in the following ways:

- Exporter Facilitation – Our team provides export advisory services and hosts various information sessions and workshops on a number of subject areas to improve exporter competitiveness. We also assist exporters in removing obstacles/ bureaucracy they may encounter in carrying out their export shipments.
- Inward missions - JAMPRO facilitates buyers virtually or when they visit Jamaica. JAMPRO schedules individual business meetings with buyer and suppliers based on the buyer's expressed interests. This is at no cost to the supplier.
- Trade Fair participation - JAMPRO coordinates participation in various Trade Shows. This is done on a cost sharing basis with suppliers.
- Outward Missions - JAMPRO facilitates outward missions into a market with suppliers and arrange business to business (B2B) matchmaking meetings.
- Buyer Recruitment - Our team facilitates buyer introduction to entities that are export ready. Prior to introducing Jamaican suppliers to international buyers, JAMPRO requires that your business is export ready. To assess your export readiness, you may complete the Export Readiness Checker found here: <https://forms.office.com/r/sZufwfhZP8and>.

Additionally, businesses will be asked to share their export history, company profile, markets of interest, certifications acquired, production capacity and export capacity.





## Contact us

### HEAD OFFICE

18 Trafalgar Road  
Kingston 10, Jamaica W.I.  
T: +1 876 978 7755; 978-3337  
E: [info@dobusinessjamaica.com](mailto:info@dobusinessjamaica.com)  
Local Toll Free: 888 INVESTJA

### NORTH AMERICAN REGIONAL OFFICE

767 3rd Avenue, Second Floor  
New York, NY 10017, USA  
T: 646-213-0101  
E: [jampronewyork@dobusinessjamaica.com](mailto:jampronewyork@dobusinessjamaica.com)

303 Eglinton Avenue East, 2nd Floor  
Toronto, Ontario, M4P 1L3, Canada  
T: 416 932 2200 (main) 416-598-3008  
E: [jamprocanada@dobusinessjamaica.com](mailto:jamprocanada@dobusinessjamaica.com)  
North America Toll Free: 1 877 JAMVEST

### EUROPEAN REGIONAL OFFICE

1 Prince Consort Road,  
London SW7 2BZ, England  
T: + 44 20 7 584 8894  
F: + 44 20 7 823 9886  
E: [jamprouk@dobusinessjamaica.com](mailto:jamprouk@dobusinessjamaica.com)